

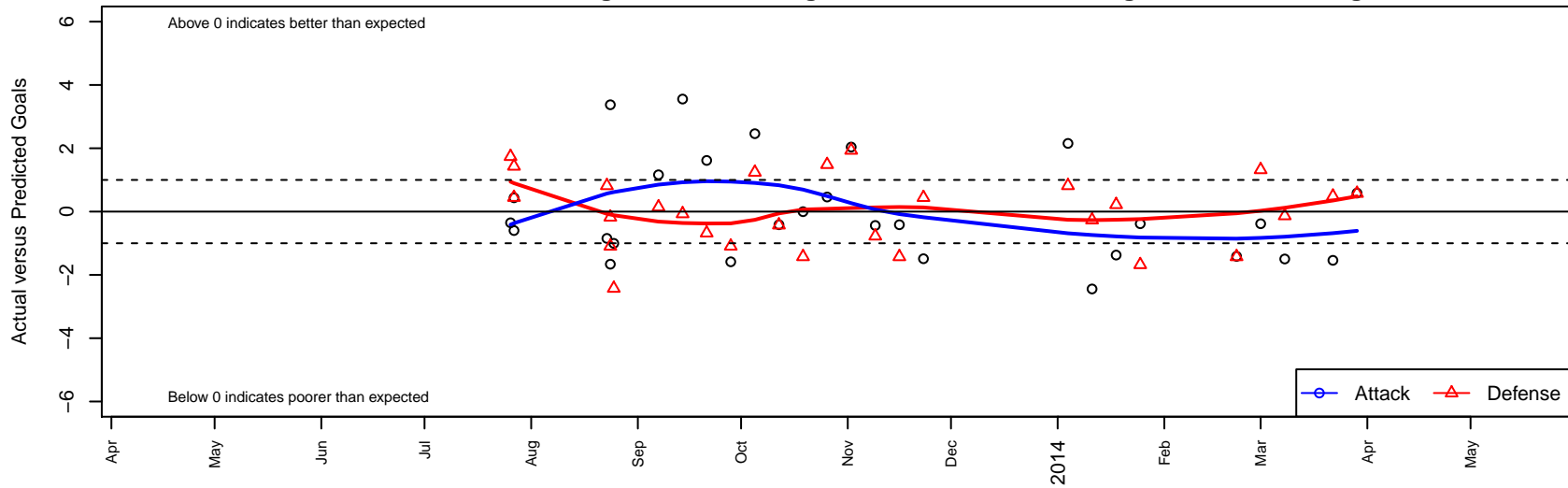
Seattle United S Blue B00

Seattle United Regional
 Seattle, WA
 B00 total strength=910
 attack=1.66 defense=1.29
 fall league = NPSL B13D1, NPSL Spr B13D1
 alt names used:
 Seattle United S Blue B00
 Seattle United S Blue
 Seattle United South B00 Blue
 SEATTLE UNITED SOUTH BLUE (WA)
 Seattle United S Blue [B00]
 2013 Seattle United South B00 Blue

Venues played:
 Oswego Nike Cup Gold U13
 Xtreme Cup BU13
 NPSL B13D1
 Founders Cup B00
 NPSL Spr B13D1



Seattle United S Blue B00
 Dots are actual minus expected GF (blue circles) and GA (red triangles).
 Blue line is smoothed change in attack strength. Red is smoothed change in defense strength.



	date	home		away		venue	pred.home	pred.away
25468	2014-03-29	Seattle United S Blue B00	2	FC Edmonds Fury B00	1	NPSL Spr B13D1	1.41	1.57
25199	2014-03-22	Kent United Green B00	1	Seattle United S Blue B00	0	NPSL Spr B13D1	1.48	1.54
23983	2014-03-08	Seattle United S Blue B00	1	Crossfire Select Mix B00	1	NPSL Spr B13D1	2.50	0.87
23497	2014-03-01	Seattle United S Blue B00	1	Seattle United W Blue B00	0	NPSL Spr B13D1	1.38	1.32
23003	2014-02-22	FC Edmonds Fury B00	3	Seattle United S Blue B00	0	NPSL Spr B13D1	1.57	1.41
21731	2014-01-25	Seattle United S Blue B00	1	Seattle United W Blue B00	3	Founders Cup B00	1.38	1.32
21333	2014-01-18	Whatcom Rangers Black B00	0	Seattle United S Blue B00	6	Founders Cup B00	0.22	7.37
21130	2014-01-11	Seattle United S Blue B00	0	Impact FC Black B00	1	Founders Cup B00	2.44	0.73
20914	2014-01-04	Kent United White B00	0	Seattle United S Blue B00	8	Founders Cup B00	0.82	5.85
19134	2013-11-23	Seattle United S Blue B00	0	Crossfire Select Greenwalt B00	1	NPSL B13D1	1.49	1.44
18501	2013-11-16	FC Edmonds Fury B00	3	Seattle United S Blue B00	1	NPSL B13D1	1.57	1.41
17755	2013-11-09	BYSC Select Cochran B00	2	Seattle United S Blue B00	1	NPSL B13D1	1.23	1.44
16790	2013-11-02	Seattle United S Blue B00	4	Seattle United S Black B00	0	NPSL B13D1	1.96	1.94
15903	2013-10-26	Kent United Green B00	0	Seattle United S Blue B00	2	NPSL B13D1	1.48	1.54
14975	2013-10-19	Nortac Colibri B00	4	Seattle United S Blue B00	1	NPSL B13D1	2.57	1.00
13922	2013-10-12	Seattle United S Blue B00	1	FC Edmonds Fury B00	2	NPSL B13D1	1.41	1.57
12910	2013-10-05	Seattle United S Blue B00	5	Seattle United Shoreline Blue B00	0	NPSL B13D1	2.54	1.24
11952	2013-09-28	Crossfire Select Button B00	3	Seattle United S Blue B00	0	NPSL B13D1	1.91	1.59
11012	2013-09-21	Seattle United S Blue B00	3	Seattle United W Blue B00	2	NPSL B13D1	1.38	1.32
10039	2013-09-14	Seattle United S Blue B00	6	Newport FC Cosmos B00	1	NPSL B13D1	2.45	0.93
9088	2013-09-07	Crossfire Select Merrick B00	1	Seattle United S Blue B00	3	NPSL B13D1	1.14	1.84
8417	2013-08-25	Nortac Colibri B00	5	Seattle United S Blue B00	0	Xtreme Cup BU13	2.57	1.00
8074	2013-08-24	Seattle United S Blue B00	2	TUSK Vipers B00	2	Xtreme Cup BU13	3.66	0.90
8082	2013-08-24	Seattle United S Blue B00	8	3 Rivers Lowry B00	1	Xtreme Cup BU13	4.63	0.82
7720	2013-08-23	Kent United White B00	0	Seattle United S Blue B00	5	Xtreme Cup BU13	0.82	5.85
4721	2013-07-27	Crossfire Oregon Green I B00	2	Seattle United S Blue B00	1	Oswego Nike Cup Gold U13	3.43	0.56
4723	2013-07-27	Seattle United S Blue B00	1	Estrella de Chile FC 2001B	1	Oswego Nike Cup Gold U13	1.60	1.45
4540	2013-07-26	Westside Timbers Copa B00	4	Seattle United S Blue B00	0	Oswego Nike Cup Gold U13	5.74	0.35